



**Dear Light Analyzer user**

**Light Analyzer** software is the software properly designed and developed by **AIM** to analyze the data stored in the memory of your **MyChron Light TG**.

Your new Instrument is the great evolution of MyChron Light MCL. Evolution that includes the possibility of downloading data stored in the memory of **MyChron Light TG** and this new, powerful software, **Light Analyzer**, to analyze them.

**Light Analyzer** software allows you to see histograms of run and laps as well as to compare different laps. Moreover you can see histograms of a great number of channels as well as insert additional information related to single runs.

**Light Analyzer** will help you improving your performances day by day.

For any doubt, information or question, please visit our website: [www.aim-sportline.com](http://www.aim-sportline.com).

Thank you for your purchase of **Light Analyzer**.



**TABLE OF CONTENTS**

<b><i>MyChron Light TG and the computer</i></b> .....	<b>3</b>
<b>Software and USB drivers installation</b> .....	<b>4</b>
<i>Installation under Windows XP<sup>TM</sup></i> .....	5
<i>Installation under other supported operative systems</i> .....	10
<b><i>Light Analyzer</i></b> .....	<b>12</b>
<b>How to download a test</b> .....	<b>12</b>
<b>Analyzing downloaded data</b> .....	<b>14</b>



## MyChron Light TG and the computer

**MyChron Light TG** has been designed and developed to be interface able with a PC. It is in fact possible to connect it to your PC through the optional USB cable, so to download and analyze data stored in its memory.

The software properly developed by Aim to interface **MyChron 3 Light TG** with the PC is **Light Analyzer**.

**Light Analyzer** has been designed and developed to be absolutely reliable and friendly to use. Its proper working has been tested with these operative systems:

- **Microsoft Windows 98™;**
- **Windows 2000™;**
- **Windows Me™;**
- **Windows Xp™.**

**NON SUPPORTED operative systems are:**

- **Microsoft Windows 95™;**
- **Microsoft Windows NT™**
- **All non Microsoft Operative Systems**

**In the following pages is the procedure to install software and USB drivers on your PC.**



## Software and USB drivers installation

Inside **MyChron Light TG** packaging you find a CD containing **Light Analyzer**, the software developed by AIM to download and analyse the data stored in its memory.

**Before installing the software, please close all applications and DO NOT connect MyChron Light TG to the Pc BEFORE SOFTWARE AND USB DRIVERS HAVE BEEN INSTALLED.**

To install the software, insert the CD in the CD-ROM drive: if *auto run* option is enabled, software installation starts automatically (an interface appears, please click on “*Install Light Analyzer*” button), otherwise, please browse the CD and click on *SETUP* icon.

Here follows detailed description of software and USB drivers installation under **Windows XP** operative system. Installation under **Windows 2000**, **Windows Me** and **Windows 98**, are briefly described. For further information on the subject, please refer to *Installation\_xxx.pdf* file you find on our website [www.aim-sportline.com](http://www.aim-sportline.com).



## Installation under Windows XP™

As installation procedure starts you see this screenshot:



Figure 17 – Light Analyzer first screenshot

Please click on “*Install Light Analyzer*” button.

Here follows sequence of all screenshot that appears and explanation of what to do.

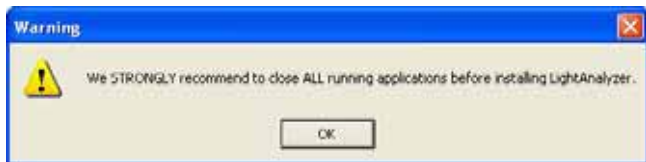
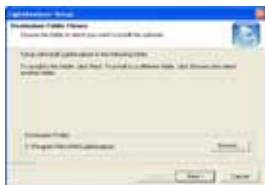


Figure 18 – Light Analyzer safety warning message

Please **close all applications** and click on “OK” button.



If you want to install **Light Analyzer** in the default destination folder, please click on “Next>” button



**Fig. 19** – Destination folder

If you want to select a custom destination folder click on “Browse” button. The screenshot in **Figure 20** appears. Please select your preferred destination folder.



**Fig. 20** - Browse folders

Click on “INSTALL” button



**Fig. 21** – Installing USB Drivers



## Light Analyzer

The system notifies you that the software you are installing has not passed Windows Logo testing. Click on “Continue anyway” button.



Fig. 22 - Logo testing Window

The system asks you to restart your Pc. Click on “OK” button.



Fig. 23 – Asking for re-start

The system notifies you that it has finished installing **Light Analyzer** on your Pc. Click on “Finish” button and restart your computer.



Fig. 24 - Installation finished



## Light Analyzer

After restart, please connect **MyChron Light TG** to the Pc and switch it on. “Found New Hardware Wizard” window appears. Please click on “*Next>*” button.

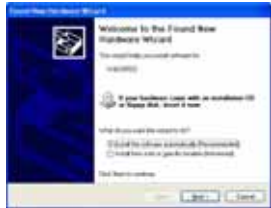


Fig. 25 - New Hardware Wizard

The system notifies you that the software you are installing has not passed Windows Logo testing. Click on “*Continue anyway*” button.

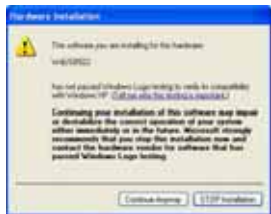


Fig. 26 – Window logo testing

The system notifies you that “Found New Hardware Wizard” has finished. **Light Analyzer** and USB drivers installation is finished. Click on “*Finish*” button.

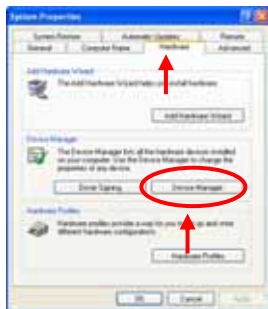


Fig. 27 – New Hardware Wizard completed



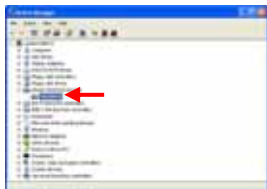


Now please check that everything works properly. Go to control panel (Click on Start / Settings / Control Panel) and select “System” icon. The screenshot in **Figure 28** appears. Please select Hardware layer and press “Device Manager” button.



**Fig. 28** - System properties window.

The screenshot in **Figure 29** appears, where you find a new voice: “HID” and in sub-node “WdUSB522”.



**Fig. 29** – Device Manager window.

Check of installation is finished. Please launch **Light Analyzer** software.



## ***Installation under other supported operative systems***

### **Windows 2000™ and Windows ME™**

- 1) Press “*Install Light Analyzer*” button;
- 2) Please close all applications and press “OK” button;
- 3) Press “*Next>*” button
- 4) Press “*INSTALL*” button;
- 5) Press “*Yes*” button;
- 6) Press “*OK*” button;
- 7) Press “*Finish*” button;
- 8) Restart the Pc; after restart, please connect **MyChron Light TG** to the Pc and switch it on;
- 9) Press “*Yes*” button;
- 10) Go to control panel, click on “*System Properties*”;
- 11) Select “*Hardware*” layer and click on “*Device Manager*” button;
- 12) You find a new voice: Human Interface Device and WdUSB522 in sub-node;
- 13) Launch **Light Analyzer** software



## Windows 98™

- 1) Click on “*Install Light Analyzer*” button;
- 2) Please close all applications and press “OK” button;
- 3) Press “*Next>*” button
- 4) Press “*INSTALL*” button;
- 5) Press “OK” button;
- 6) Press “*Finish*” button;
- 7) Restart the Pc; after restart, please connect **MyChron Light TG** to the Pc and switch it on;
- 8) Go to control panel, click on “*System Properties*”;
- 9) Select “*Device Manager*” layer;
- 10) You find a new voice: HID Class and WdUSB522 in sub-node;
- 11) Launch **Light Analyzer** software



## Light Analyzer

Now that **Light Analyzer** and USB drivers have been installed, let's start using the software and analyzing the data stored in its memory.

### How to download a test

First of all you need to download data:

- please switch on your Pc,
- launch **Light Analyzer** software,
- connect **MyChron Light TG** to the Pc and switch it on,
- click on *"Download"* button on the top toolbar. The following screenshot appears.

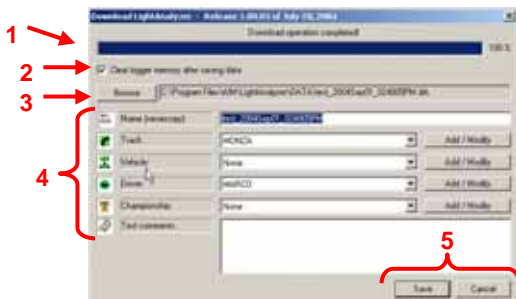


Figure 30 – **Light Analyzer** download window



Let's analyze the window in **Figure 30**:

1. on the top of the window is a wait bar that shows you downloading status (in the figure reported above downloading has just been completed);
2. default setting enables “*Clear logger memory after saving data*” checkbox; if you want to keep data stored in the memory of your **MyChron Light TG**, please disable this checkbox; we on the contrary recommend to clear logger memory after each download (leave this checkbox enabled).
3. default saving folder is: C: \ Program Files \ AIM \ LightAnalyzer\ DATA \ test\_xxx.drk; if you want to select a custom folder, please click on “*Browse*” button;
4. test information; please fill in all information related to the downloaded test: name (necessary), track, vehicle, driver, championship and test comments (all optional)
5. save/cancel; when download is finished, as in the above figure, please click on “*Save*” button to save data or on “*Cancel*” button not to.



## Analyzing downloaded data

After download, you can analyze stored data. Launch **Light Analyzer**; the screenshot in **Figure 31** appears:



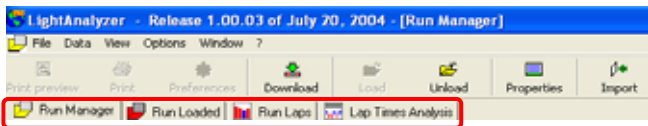
**Figure 31** – Run Manager Window

On the right part of the screenshot are listed all stored tests.



**Figure 32** - Top toolbar

To load a test you just need to select it and click on “Load” button on the top toolbar (red circled in **Figure 32**).



**Figure 33** – Run toolbar

Run toolbar, made of four layers, appears (see **Figure 33**).



Figure 34 – Run Manager layer

Run Manager layer: (above reported)

Shows all downloaded tests (loaded or not)

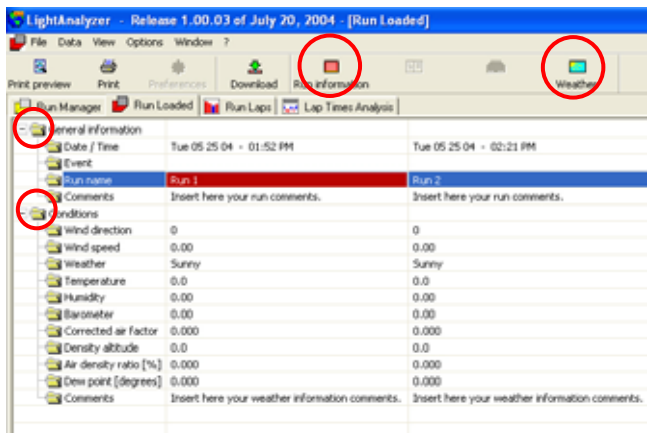
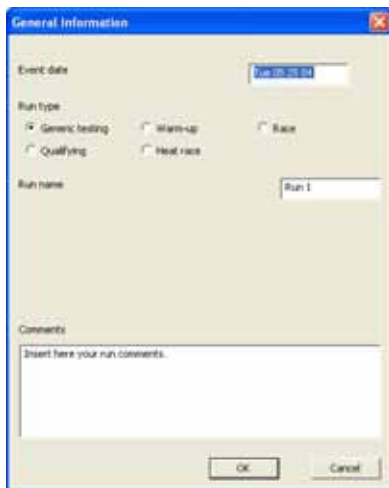


Figure 35 - Run loaded layer



**Run Loaded layer:** (see **Figure 35**)

shows all available information related to the loaded test. To insert other information concerning the loaded test, please click on the two head-folders (General information and conditions) or on the two corresponding icons, all red circled in **Figure 35** and the windows in **Figures 36** and **37** appear.



**Figure 36** – General Information window

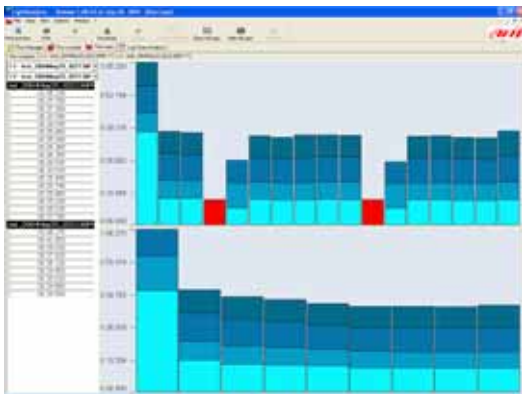
*General Information* window. This window allows you to insert information about event date, run type, run name, comments.





**Figure 37** - Weather conditions window

*Weather Condition* window. This window allows you to insert information about weather conditions: temperature, humidity, barometer, wind speed and direction, corrected air factor, density altitude, air density ratio, dew point, comments.



**Figure 38** – Run Laps window – run compare sub layer

**Run Laps layer** shows, on the right, lap times and, on the left, lap times histogram. It has as sub-layers as loaded runs more a run–compare sub-layer (**Figure 38**). Laps can be enabled/disabled clicking on them on the left part of the layer or on “*Enable/disable*” button on the top toolbar. Histogram can be shown/hidden clicking on “*Show all laps*” / “*Hide all laps*” buttons on the top toolbar. Run can be unloaded clicking on “*Unload*” button on the top toolbar.

**Please note**, blue shades refer to split times and red colour to a lap without split times. These colours are set by default.

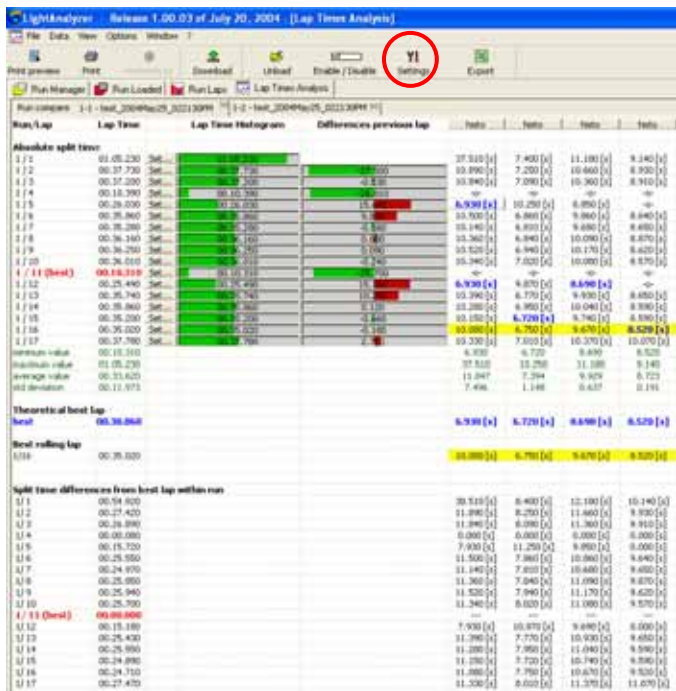


Figure 39 - Lap Time analysis widow – test sub-layer



**Lap Times Analysis layer:** this layer shows all information related to the loaded runs; like Run Laps layer this one has as sub-layers as the number of loaded runs more a run-compare sub-layer. Here follows explanation of one lap timer analysis layer.

On the left part of the layer are “Absolute split times”, while in the central part are lap time and lap times differences histograms. On the right part of the layer you see all split times (whose sum makes lap time). These last times can be shown as values (like in **Figure 39**) or as histograms. To see them as histogram, please click on “*Histo*” button on top of the split times column you want to see as histogram.

Blue coloured splits are the splits that make the best theoretical lap. In fact, sum of blue coloured split times makes best theoretical lap time (blue coloured in the column on the left part of **Figure 39**). Yellow coloured cells makes best rolling lap. All settings of this window can be customized. To do so, please click on “*Settings*” button on the top toolbar (circled in **Figure 39**). The window in **Figure 40** appears.



**Figure 40** – Settings window

Where:

- *Printouts* box sets printing settings (number of rows and columns as well as font heights);
- *Logic* box sets the logic used to show split times: they can be shown each one with its own time (differences) or as a cumulative time from start / finish line (cumulative)
- *Format* box: Set colours and styles used for characters and histograms; they are customizable; to change a colour, please click on the button on the right of each set colour and a colour window appears; to change character styles enable / disable the checkbox red circled in **Figure 40**.



## Light Analyzer

**Moreover** all tests can be exported in Microsoft Office Excel format clicking on “*Export*” button on the top toolbar (red circled in **Figure 41**).



**Figure – 41** Light Analyzer top toolbar